



# ULTRASOUND IN THE FETAL CARDIOVASCULAR EXAMINATION

20th International  
Symposium & Workshop

**27th to 31st January 2025**

## THE CONFERENCE

In 2025 the Children's Heart Center Linz and the Department of Fetomaternal Medicine of the Kepler-University Hospital Linz will host the 20th internationally renowned symposium **ULTRASOUND IN THE FETAL CARDIOVASCULAR EXAMINATION** in Lech am Arlberg, Austria. This conference addresses perinatologists, pediatric and fetal cardiologists, obstetricians, neonatologists, and sonographers.

## FACULTY

Sally Ann Clur ( <i>Netherlands</i> ),	Jack Rychik ( <i>USA</i> ),
Annegret Geipel ( <i>Germany</i> ),	Horst Steiner ( <i>Austria</i> ),
Kurt Hecher ( <i>Germany</i> ),	Taisto Sarkola ( <i>Finland</i> ),
Kai-Sven Heling ( <i>Germany</i> ),	Iris Scharnreitner ( <i>Austria</i> ),
James Huhta ( <i>USA</i> ),	Anna Seale ( <i>United Kingdom</i> ),
Edgar Jaeggi ( <i>Canada</i> ),	Lila Seidl-Mlczoch ( <i>Austria</i> ),
Asma Khalil ( <i>United Kingdom</i> ),	Andreas Tulzer ( <i>Austria</i> ),
Mats Mellander ( <i>Sweden</i> ),	Gerald Tulzer ( <i>Austria</i> ),
Anita Moon-Grady ( <i>USA</i> ),	Dagmar Wertaschnigg ( <i>Austria</i> ),
Philipp Moser ( <i>Austria</i> ),	Barbara Wichert-Schmitt
Annika Öhman ( <i>Sweden</i> ),	( <i>Austria</i> )
Greg Ryan ( <i>Canada</i> ),	

## UNDER THE PATRONAGE OF:

International Society of Ultrasound  
in Obstetrics and Gynecology (ISUOG),  
The Association for European Paediatric  
and Congenital Cardiology (AEPC),  
Austrian Society of Ultrasound in Medicine (ÖGUM),  
German Society of Ultrasound in Medicine (DEGUM),  
Swiss Society of Ultrasound in Medicine (SGUM).

## LOCATION

### Hotel Sonnenburg

There is a number of hotel rooms reserved for participants of the conference with reduced rates. Please note that booking rooms with reduced rates is possible until mid of November 2024 and subject to availability!

<https://www.sonnenburg.at/>

### Burghotel Oberlech

Rooms in Oberlech can also be booked here. The hotel Burg is just a few meters from the congress hotel.

<https://www.burghotel-lech.com/>

For participants staying in Lech, the easiest way to get to Oberlech is by using the "Bergbahn Lech-Oberlech".

## CME CREDITS

The 20th Ultrasound in the Fetal Cardiovascular Examination has been accredited by the European Board for Accreditation of Continuing Education for Health Professionals (EBAC®) with 33 CME credits.

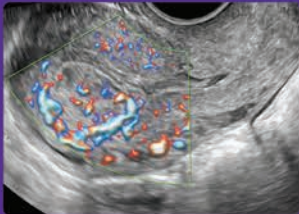
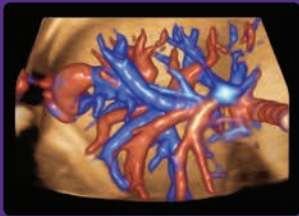
Through an agreement between the European Board for Accreditation of Continuing Education for Health Professionals and the American Medical Association physicians may convert EBAC® CE credits to AMA PRA Category 1 Credits™.

Information on the process to convert EBAC credit to AMA credit can be found on the AMA website. Other health care professionals may obtain from the AMA a certificate of having participated in an activity eligible for conversion of credit to AMA PRA Category 1 Credit™.



# Powering connections

Pushing innovation further



Over the years, our commitment to creating a healthier future for women has never wavered.

By powering the most progressive imaging technologies and intelligent tools with every breakthrough and big idea, we are pushing innovation further and enhancing connections to exponentially improve women's lives.

Choose Voluson™, a partner who is as committed to women's health as you are.

## Voluson

A Healthier Future for Women

### UFCE 2026

We are happy to announce that the 21st Ultrasound in the Fetal Cardiovascular Examination (UFCE 2026) will take place from January 26-30 2026 in Lech, Austria

Early registration will be available by February 1st 2025! The number of participants will be limited to 110 persons. Registrations will be accepted on a first come, first served basis. You can easily register on our webpage at [www.fetal-ultrasound.com](http://www.fetal-ultrasound.com) or by scanning the QR code. If you have any questions, you can also contact our office at [office@fetal-ultrasound.com](mailto:office@fetal-ultrasound.com) We're looking forward to seeing you again in 2026!

### PARTNER AND SPONSORS

A big thank you to our Platinum Sponsor GE HealthCare and our partners „Kinderherz Zentrum Linz“ and „Research-Association CHL“ as well as our other sponsors!



### CONTACT

Mrs. Miriam Preinfalk, [office@fetal-ultrasound.com](mailto:office@fetal-ultrasound.com), +43 5 76808422003, [www.fetal-ultrasound.com](http://www.fetal-ultrasound.com)



**SESSION 1 / 8:30-15:00**

Chair: Scharnreitner, Tulzer A

- 08:30-09:00 The Fetal 4 Chamber View  
*Kai Heling*
- 09:00-09:30 The Fetal 3 Vessel Trachea View  
*Sally-Ann Clur*
- 09:30-10:00 Refining Doppler Examination:  
Technical Aspects, Tips and Tricks  
*Horst Steiner*
- 10:00-10:30 Early Fetal Echo  
*Anita Moon-Grady*
- // Break 10:30-11:15
- 11:15-12:15 From Basics to State of the Art:  
From Diagnosis to Delivery  
*Iris Scharnreitner*
- // Break 12:15-13:00
- 13:00-15:00 Questions and Answers

**SESSION 2 / 16:00-17:30**

Chair: Steiner, Moon-Grady

- 16:00-16:20 Prenatal Counseling:  
Principles and Practice  
*Jack Rychik*
- 16:20-16:40 Assessment of Fetal Cardiac Function:  
Established and New-Techniques  
*Annika Öhman*
- 16:40-17:00 Extracardiac Anomalies in Congenital  
Heart Disease  
*Lila Seidl-Mlczoch*
- 17:00-17:30 Maternal Valvular Heart Disease in  
Pregnancy  
*Barbara Wichert-Schmitt*
- // Break 17:30-18:00

**SESSION 3 / 18:00-19:00**

Chair: Heling, Öhman

- 18:00-18:20 Aspects of Uncertainties in Accuracy  
of Perinatal Care - Planning in CHD  
*Taisto Sarkola*
- 18:20-18:40 Fetal IUGR - The Fetal Cardiologist's  
Perspective  
*Sally-Ann Clur*
- 18:40-19:00 Can CHD be Prevented with  
high-dose Folate?  
*James Huhta*

**SESSION 4 / 8:30-15:00**

Chair: Tulzer G, Wertaschnigg

- 08:30-09:15 Fetal Cardiac Interventions:  
What's Important for the Fetal  
Cardiologist vs. Obstetrician  
*Iris Scharnreitner & Andreas Tulzer*
- 09:15-09:40 Prospective Study on Fetuses with  
Critical Aortic Stenosis  
An Update  
*Mats Mellander*
- 09:40-10:05 Maternal Hyperoxygenation Testing  
and Therapy: Is it worth it?  
*Edgar Jaeggi*
- 10:05-10:30 Cardiac Function in TTTS & Role of  
Fetal Therapy  
*Greg Ryan*
- // Break 10:30-11:15
- 11:15-12:15 From Basics to State of the Art:  
Fetal Cardiac MRI  
*Lila Seidl-Mlczoch & Philipp Moser*
- // Break 12:15-13:00
- 13:00-15:00 Questions and Answers

**SESSION 5 / 16:00-17:30**

Chair: Huhta, Seale

- 16:00-16:20 The Ductus Arteriosus -  
The Normal and the Abnormal  
*Taisto Sarkola*
- 16:20-16:40 The Ductus Venosus -  
The Normal and the Abnormal  
*Horst Steiner*
- 16:40-17:00 Fetal Ebstein's Anomaly  
*Annegret Geipel*
- 17:00-17:30 Heterotaxy Syndrome:  
an Interdisciplinary Disease  
*Lila Seidl-Mlczoch*
- // Break 17:30-18:00

**SESSION 6 / 18:00-19:00**

Chair: Tulzer A, Scharnreitner

- 18:00-19:00 **LIVE SCANNING**  
*Gerald Tulzer*

**SESSION 7 / 8:30-15:00**

Chair: Clur, Geipel

- 08:30-09:00 Vasa Praevia: Detection and Management  
*Dagmar Wertaschnigg*
- 09:00-09:30 Pregnancy in Women with the Fontan Circulation  
*Barbara Wichert-Schmitt*
- 09:30-10:00 The Fetal Hypoplastic Left Heart Complex  
*Annika Öhman*
- 10:00-10:30 The Spectrum of Tetralogy of Fallot: They are not all the same  
*Anna Seale*
- // Break 10:30-11:15
- 11:15-12:15 Puzzle The Expert - Tricky Cases:  
*Andreas Tulzer and Colleagues*
- // Break 12:15-13:00
- 13:00-15:00 Questions and Answers

**SESSION 8 / 16:00-17:30**

Chair: Rychik, Mellander

- 16:00-16:20 Twin-Anemia Polycythaemia Sequence: Controversies in Diagnosis and Management  
*Asma Khalil*
- 16:20-16:40 Cardiac Masses  
*Anita Moon-Grady*
- 16:40-17:00 Genetics in Congenital Heart Disease  
*Annegret Geipelt*
- 17:00-17:30 Simple Transposition of the Great Arteries: Hemodynamic Aspects and Delivery Planning  
*Anna Seale*
- // Break 17:30-18:00

**SESSION 9 / 18:00-19:00**

Chair: Jaeggi, Steiner

- 18:00-19:00 KEY NOTE LECTURE  
From Diagnosis to Therapy: Past, Present and Future of Fetal Cardiac Interventions  
*Gerald Tulzer*

## Elevating Fetal Healthcare

### Smart-sync: Doppler Ultrasound Gating for cardiovascular MRI Applications

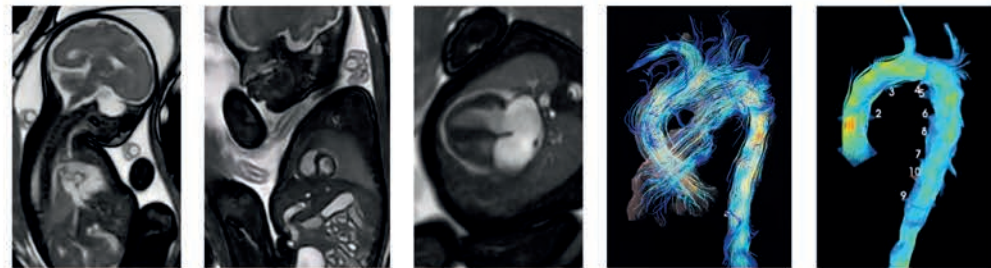
#### Use the power of cardiac MR imaging for prenatal diagnosis

The only current possibility to diagnose Congenital Heart Disease (CHD) is using echocardiography. Smart-sync is changing this as it provides a direct synchronization of the fetal heart cycle with the MRI system. Hence, it enables the access of high-quality cardiac MR imaging for the fetus with a large field of view in any plane and high spatial resolution.

#### Benefit

The early diagnosis of CHD is of crucial importance for the survival and long-term health of children. Adding MR imaging as a second line imaging modality in patients with suspected fetal cardiac pathology can help with delivery planning, organization of early postnatal care and provides valuable information for parental counselling.

Adding smart-sync to your MRI system is not only a new feature, it enables a new patient journey for the precise diagnosis of CHD.



#### MR exam cards

As the gating signal appears as a standard ECG signal on the MRI scanner all standard MRI cardiac sequences are available.

**SSFP CINE:** Typically used to assess cardiac function and morphology.

**PC Blood Flow:** 2D Measurement of Blood Flow

**4D Flow:** Assessment of the Aorta and Great Vessels

**T1/T2 Mapping:** Characterization of the Cardiac Tissue

#### Regulatory Approval

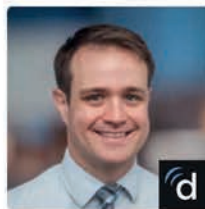
- European Union: CE certified,
- USA: Approved under 510k K212271
- Canada: Approved under License 111436

#### Features

- Smart-sync utilizes Doppler Ultrasound to measure the fetal cardiac motion.
- Cardiac gating simply appears as an ECG signal on the MRI scanner.
- It can be used with all 1.5T and 3T systems.
- Latest cardiac imaging solutions can be used.
- Reliable results after gestational week 30.

#### Installation

- Smart-sync is a plug and play device that does not require any special installation.
- It is compatible with Siemens / Philips and GE / MR Systems using the standard ECG interface



Richard Friesen,  
Pediatric Cardiologist,  
Children's Hospital  
Colorado

*"Fetal CMR is an amazing tool that has transformed the way we diagnose congenital heart disease prenatally, and more importantly has helped us provide more clarity and understanding for expecting parents."*



THURSDAY  
30th JAN 2025  
UFCE 2025

### SESSION 10 / 8:30-15:00

Chair: Mellander, Hecher

- 08:30-09:00 Management of Fetal Pericardial & Pleural Effusions  
*Greg Ryan*
- 09:00-09:30 Ventricular Aneurysms and Diverticula in the Fetus  
*Jack Rychik*
- 09:30-10:00 3D Angio in Fetal Echocardiography  
*Kai Heling*
- 10:00-10:30 Fetal Cardiovascular Profile Score: Meta-Analysis for Congestive Heart Failure  
*James Huhta*
- // Break 10:30-11:15
- 11:15-12:15 From Basics to State of the Art: Assessment of Fetuses with Arrhythmias  
*Edgar Jaeggi*
- // Break 12:15-13:00
- 13:00-15:00 Questions and Answers

### SESSION 11 / 16:00-19:00

Chair: Steiner, Tulzer G

- 16:00-17:30 KEY NOTE LECTURE Of Donors and Recipients  
*Kurt Hecher*
- // Break 17:30-18:00
- 17:30-19:00 Live Scanning  
*Kai Heling*



## Bleeding Control in Surgical Procedures



**axiostat**<sup>®</sup>  
stops bleeding, instantly

100% Chitosan **Haemostat**

D&S BIOTRADE GmbH | [www.dns-biotrade.at](http://www.dns-biotrade.at) | [office@dns-biotrade.at](mailto:office@dns-biotrade.at) | +43 2236 374023 0

FRIDAY  
31st JAN 2025  
UFCE 2025

### SESSION 12 / 08:30-10:45

Chair: Hecher, Moon-Grady

- 08:30-09:00 Fetal Tachyarrhythmias:  
Diagnosis and Management in 2025  
*Edgar Jaeggi*
- 09:00-09:30 The Fetus with Slow Heart Rate  
*Sally-Ann Clur*
- 09:30-10:15 Selective Fetal Growth Restriction and  
Fetal Interventions in Twins:  
Latest Evidence  
*Asma Khalil*

// Break 10:15-10:45

### SESSION 13 / 10:45-12:15

Chair: Scharnreitner, Tulzer A

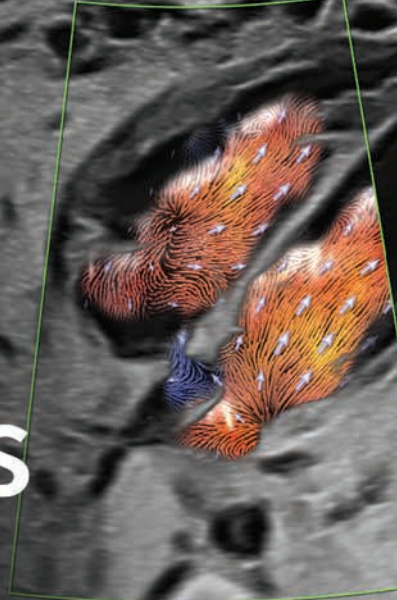
- 10:45-11:15 Artificial Intelligence in Fetal Cardiac  
Diagnosis  
*Anita Moon-Grady*
- 11:15-11:45 The Placenta in Congenital Heart  
Disease and Development of the  
Artificial Placenta  
*Jack Rychik*
- 11:45-12:15 Summary UFCE 2025 and Closing  
*Andreas Tulzer*





GE HealthCare

Voluson  
Expert 220



# Powering connections

Pushing innovation further

## New Horizons in Fetal Imaging

Voluson™ *Graphicflow* – a new ultrasound tool for fetal cardiac imaging

Presented by: Professor Rabih Chaoui



Scan to watch  
Prof. Chaoui's  
session

## Voluson

A Healthier Future  
for Women